

The LYRIC THEATRE  
*Singers*

Musical Director & Director  
BOB BACHELOR

BROADWAY

WITH

LOVE

JUNE 11 to 13  
2026

CONCORDIA THEATRE  
[theylyrictheatre.ca](http://theylyrictheatre.ca)



MF musical



reddream  
STUDIOS

MNP



Gestion privée  
Private Wealth

FOREST.  
INSURANCE SOLUTIONS

PICKLE  
CREATIVE AGENCY



# OPSIA

## IT SOLUTIONS FOR YOUR BUSINESS

We are the team of computer science engineers that know the data center infrastructure as well as custom software development. We provide a wide range of services:

**Datacenter Consulting**

**Managed Services**

**Cloud Migration**

**Colocation**

**Data protection**

**Storage, Backup and  
Disaster Recovery**

**Software Development**



We help you to identify challenges and uncover opportunities so that we can diagnose and build a plan to support your strategic, long-term goals via cost-effective and results-driven technology solutions. This helps us build a customized IT solution that's unique to each business's needs.

# Welcome • Bienvenue

Broadway with Love is the perfect title for this year's show because it really is brought to you with love! As we have been navigating a difficult time with the loss of our beloved founder, we decided to come together and do this for the love of our community. Music is such a healing tool and every time we come together to rehearse, I have had the privilege of being embraced by the music the singers make and it has been the ultimate salve.

*J'ai consacré toute ma vie professionnelle aux arts de la scène, et je suis pleinement conscient des grands souliers que j'ai à chausser en prenant les rênes de Broadway with Love. Ce n'est pas un défi effrayant ou menaçant ; c'est une épreuve réconfortante, et je m'y enveloppe avec joie. J'entends la voix et le rire de Bob à chaque décision que je prends, et cela me pousse à travailler encore plus fort pour qu'il soit fier de moi.*

The Lyric Theatre Singers are more than just a choir or an ensemble, they are chosen family. Members find mentorship, lifelong friendships, and sometimes even life partners. We have celebrated marriages, babies, and birthdays. We have been there for each other through illness and loss. No matter what happens, we come together and make music.

As you sit in your seat and read the set list of songs to come, know that each number was chosen for a reason. Each song has a story to tell. Some will make you laugh, some will make you cry, but every song will paint an image and make you feel something.

If you are a newcomer to a Lyric show, welcome and we hope to see you for many years to come. If you are here for the umpteenth time, welcome back and thank you for your support. Thank you for helping us celebrate Bob's vision as seen through my lens.

*Jonathan Patterson*

**Director, Choreographer, Conductor**

*Broadway with Love*

---



## ARTISTIC TEAM • Jonathan Patterson

Based in Montréal, Jonathan is an award-winning multidisciplinary artist whose work spans from theatre to opera to musicals.

Recent acting credits include: *Hansel & Gretel Go West* (Widow Wady, Ottawa Musicals); *Bed & Breakfast* (Drew, Hudson Village Theatre, META for Outstanding Lead Performer); *Beautiful: The Carole King Musical* (Righteous Brother, Segal Centre/RMTC); *9 to 5 the Musical* (Dwayne & Mr. Tinsworthy, Capitol Theatre).

Jonathan is also an accomplished director, music director, and choreographer. Some recent credits include: *Anne of Green Gables* (dir./music dir.); *Max and Aaron Write a Musical* (music dir./ chor.); *Rodgers + Hammerstein's Cinderella* (dir./chor.).

A performing-arts educator, Jonathan is the Head of Music at the National Theatre School of Canada (NTS). He is also on the faculty of Opera McGill at the Schulich School of Music of McGill University (2010-present) and has a busy private voice studio.

This Summer, Jonathan can be seen at the Watermark Theatre on PEI, returning to the role of Drew in *Bed & Breakfast*.

# Broadway with Love Honours Bob Bachelor's Enduring Legacy

« Broadway with Love » rend hommage à l'impact perdurant de Bob Bachelor



Que vous soyez assis dans la salle en attendant le spectacle, peut-être pendant l'entracte, ou que vous ayez emporté ce programme chez vous pour le feuilleter après coup, vous appartenez sans doute à différentes catégories de spectateurs. Peut-être que « Broadway with Love: Du coeur à la scène » est votre premier spectacle du Lyric Theatre Singers auquel vous assistez. Ou peut-être avez-vous déjà pris place dans ce public à de nombreuses reprises, et si tel est le cas, vous connaissiez probablement Bob Bachelor, personnellement ou non. Il est également probable que vous soyez un ancien de Lyric ou que vous ayez déjà chanté avec Bob, dans l'une des autres compagnies et communautés qu'il a touchées.

If that is the case, you know that Bob was more than the founder of The Lyric Theatre Singers; more than the man who brandished his baton with fervour and precision, and led his vocal ensemble of 36 years with rigour. He was a man of incredible sensibility and was equipped with a profound pride, yes, but mostly an important understanding of the community he had built, and of the impact it had on people's lives, in a way that transcends the rehearsal room.

Bob was a man of great heart and a mentor to many. The impact of his work is incredible and for the singers, it persists in every rehearsal, precious moment spent together and every note sung, because year after year, he built more than a show. He built a place where people found a second family, built lifelong friendships, and even started families of their own. The countless hours he poured into his ensemble and its success created something enduring: a community whose reach extends far beyond the stage.

*Broadway with Love* may not be a tribute to Bob in the way his community, family and friends will continue to honour and remember him, but his presence is imbued throughout this production and in everything he gave to it before his untimely passing. Bob poured energy, time and, perhaps most fittingly, immeasurable love into this project, as he did so many others over the years. *Chaque chanson du programme a été choisie par lui, c'est lui qui a enseigné les morceaux aux chanteurs, puis il a passé le relais à ses collaborateurs et amis les plus proches, qui le comprenaient et partageaient sa vision unique. En ce sens, ce spectacle est profondément à l'image de « Bob » et, à sa manière, il est entièrement dédié à Bob.*

Regardless of the category of audience member you fall into, many of you may have been lucky enough to call Bob a friend, as he had a remarkable ability to make people feel seen, understood, and special. We hope you can feel the love in the theatre and that you rejoice in the moments handpicked by Bob Bachelor, for you. We hope you enjoy both the sentimental and comical moments, and savour them as interpreted by Bob's singers, who he loved and believed in, and who he trusted to simply "tell the story", as he loved to say.

## The Lyric Theatre Board of Directors

### THE LYRIC THEATRE 2026 BOARD OF DIRECTORS Conseil d'administration 2026



ALLIANCE CHORALE  
DU QUÉBEC



President/Président . . . . .	Robert Brazeau
Treasurer/Trésorière . . . . .	Linda LaRoche
VP Production . . . . .	Laurence St-Denis
VP Promotion . . . . .	Laurie-Anne Jean-Baptiste
VP Development/VP Développement . . . . .	Louise Dorais
Directors/Membres . . . . .	Hélène Charbonneau, Shy Shalev, Zihan Zuo

## ARTISTIC TEAM • ÉQUIPE ARTISTIQUE



**Cathy Burn • Guest Choreographer & Consultant**  
*Chorégraphe invitée et consultante*

Cathy has been singing and dancing in musicals from a young age. She has worked with professional, community and school groups in many capacities, including as an actor, singer, educator, choreographer, and director. Cathy has a long connection with The Lyric Theatre and performed in many of their book shows back in the 80's and 90's.

Cathy was a Lyric Theatre Singer since its inception and then went on to co-direct 15 of the 35 June Broadway shows with Bob Bachelor. Cathy is forever indebted to Bob for his trust, mentorship and friendship throughout their longtime collaborations.



**Robin Chemtov • Accompanist**  
*Pianiste accompagnateur*

Robin Chemtov (MMus, Jazz Performance, McGill) has been playing piano for over 50 years. His career blossomed in his teens years playing gigs, touring Canada with Children's Creations, and several contracts playing on cruise ships. The following decades, he acted as Musical Director for hundreds of shows, featuring a *who's who* of Québec and international celebrities.

Robin has evolved as a teacher and he is currently active in Concordia's Music department and Senate. These days, you can catch him regularly playing at Montreal's jazz clubs, and stretching into the role of accompanist with the Lyric Theatre Singers.

*L'ensemble vocal*  
*The Lyric Theatre Singers remercie*  
**le Conseil des arts de Montréal**  
*de son appui financier !*



CONSEIL  
DES ARTS  
DE MONTRÉAL

Montréal 



Prenez  
**votre place**

Take **your seat**

Félicitations aux  
Lyric Theatre  
Singers pour 35 ans  
d'harmonie et de  
musique!

Congratulations to  
the Lyric Theatre  
Singers for 35 years of  
harmony and music!

Notre prochain rôle, contribuer à vos  
grandes performances. **Bonne soirée!**

Our next role, contribute to your great  
performances. **Good evening!**

**BMO**  | **Gestion privée**  
**Private Wealth**

BMO Gestion privée est un nom de marque du groupe d'exploitation qui comprend la Banque de Montréal et certaines de ses sociétés affiliées qui offrent des produits et des services de gestion privée. « BMO (le médaillon contenant le M souligné) » est une marque de commerce déposée de la Banque de Montréal, utilisée sous licence.

BMO Private Wealth is a brand name for a business group consisting of Bank of Montreal and certain of its affiliates in providing private wealth management products and services. "BMO (M-bar roundel symbol)" is a registered trademark of Bank of Montreal, used under licence.

# SERVICES MARKETING CLÉS EN MAIN

Conçu pour extraire un maximum de saveur.

Turnkey marketing services tailored to extract maximum flavour.

Marketing  
expérientiel



Experiential  
marketing

Marketing  
numérique



Digital  
marketing

Production  
média



Media  
production

Design  
graphique



Graphic  
design

Création  
de site web



Website  
creation

**Oktav RH**

SOLUTIONS

[www.oktav-rh.ca](http://www.oktav-rh.ca)

**JEAN-PHILIPPE B-LECLAIR, CRIA**

Consultant, Ressources Humaines  
Conseiller en Relations Industrielles Agréé

- Services-Conseils
- Impartition en ressources humaines
- Recrutement
- Formation
- Conformité légale



PEOPLE ARE OFTEN SURPRISED THAT I CAN BOTH DRAW *and* SING.

I PROMISE YOU THESE ARE THE **ONLY** TWO THINGS I CAN DO.

*joined Lyric in 2025*

© [bourmerie](https://www.bourmerie.com) ← FIND ME ON SOCIAL MEDIA  
FOR MORE INFO → [BOUMFOLIO.COM](http://BOUMFOLIO.COM)

SO PLEASE READ MY COMICS SO I CAN EAT. THANKS



ASK YOUR LOCAL BOOKSELLER/LIBRARIAN

# ME Racing

*Promoters of  
auto sport at  
all levels*



*Featuring Canada's Premier International  
driver Mikael Grenier*

## CONDOS • TOWNHOUSES

Aura sur le Square  
Condominiums



Alys Townhouses



**WE BUILD A BETTER QUALITY OF LIFE**

**514 378-4008 • [groupemontclair.com](http://groupemontclair.com)**

**MNP**



**Un cabinet  
bien d'ici.**

**MNP. 100% made  
in Canada.**

**Caroline Francis**

Associée, CPA auditrice  
Partner, CPA auditor

514.744.9011

Partout où mènent les affaires  
Wherever business takes you

[MNP.ca](http://MNP.ca)



## *The Lyric Theatre Fundraising 50/50 Raffle*

\$5 for 1 ticket – \$10 for 3 tickets - \$20 for 8 tickets

TO ENTER: Purchase your tickets today from a Lyric ticket seller in the theatre or the lobby prior to curtain or during intermission. A winner will be chosen at the end of intermission at each performance. The prize will be equal to 50% of the revenue collected at that performance.

*Good luck and thank you for your support!*

*(Contest details and regulations are available in the lobby)*



## *Tirage 50/50 au profit du Lyric Theatre*

Un billet 5\$ - 3 billets pour 10\$ - 8 billets pour 20\$

POUR PARTICIPER AU TIRAGE: Voir un préposé à la vente dans la salle ou le hall d'entrée pour acheter vos billets avant le spectacle ou pendant l'entracte. Un gagnant sera choisi à la fin de l'entracte de chaque représentation. Il recevra un prix d'une valeur égale à 50 % des revenus amassés lors de la représentation.

*Bonne chance et merci de votre encouragement!*

*(Les détails et les règlements du tirage sont disponibles dans le hall d'entrée)*

License RAJC # L-05035

# THE PERFORMERS • LES ARTISTES

## The musicians / Les instrumentistes

Robin Chemtov . . . . . Piano  
Levi Dover . . . . . Bass/Basse  
Bruno Lamarche . . . . . Reeds  
Chad Linsley . . . . . Keyboard/Synthétiseur  
Guillaume Pilote . . . . . Drums/Percussions

## The Lyric Theatre Singers

**Bob Bachelor** . . . . . Artistic & Musical Director  
**Jonathan Patterson** . . . . . Director, Choreographer & Conductor

### Soprano 1

Nathalie Beaudoin  
Muriel Bernard Browman  
Claudia Carino  
Katherine Fournier  
Lindsey Hawley  
Laurie-Anne Jean-Baptiste  
Gillian Johnston  
Sophie Protopoulos  
Elaine Salvail

### Soprano 2

Maia Aziz  
Sarah Bélanger  
Geneviève Blanchette  
Allison Brown  
Frédérique Gagnier  
Karine Philippot

### Alto 1

Hélène Charbonneau  
Stacey Lavender  
Beth Mount  
Shauna Reimer  
Laurence St-Denis

### Alto 2

Gloria Aronoff  
Yamila Scarone Azzi  
Monique Boucher  
Jen Itong  
Samantha Leriche-Gionet

### Tenor 1

Eric Bolduc  
Richard Kallos  
Daniel Morais  
Kingsley Sherwood

### Tenor 2

Brad Cameron  
Serge Danis  
Robert Pilon

### Baritone/Baryton

Shawn Coverini  
Jonathan Courville-Vaive  
Zihan Zuo

### Bass/Basse

Sean Bucholz  
Jason Ferris  
Jean-Philippe Leclair

## ACT ONE • ACTE UN

### **Sounds of the Earth / It's a Grand Night for Singing**

*A Grand Night for Singing*  
Richard Rodgers & Oscar Hammerstein II

*Katherine Fournier, Richard Kallos  
Jean-Philippe Leclair  
Beth Mount, Sophie Protopoulos*

*Laurie-Anne Jean-Baptiste*

### **Long Ago (and Far Away)**

*Cover Girl*  
Ira Gershwin, Jerome Kern, arr. Mark Hayes

### **Meadowlark**

*The Baker's Wife*  
Stephen Schwartz, arr. Mac Huff

*Sophie Protopoulos*

### **Folies Bergères**

*Nine*  
Maury Yeston

*Nathalie Beaudoin, Claudia Carino  
Jean-Philippe Leclair*

### **Les couleurs du vent**

*Pocahontas*  
Alan Menken, Stephen Schwartz, arr. Mac Huff

*Sarah Bélanger*

### **Lovely**

*Putting it Together*  
Stephen Sondheim

*Allison Brown, Beth Mount  
Jonathan Courville-Vaive  
Richard Kallos, Jean-Philippe Leclair*

### **The King and I (Medley)**

Richard Rodgers & Oscar Hammerstein II, arr. Anita Kerr  
***We Kiss in a Shadow, I Have Dreamed, Something Wonderful***

### **Something's Coming / Tonight**

*West Side Story*  
Stephen Sondheim, Leonard Bernstein, arr. Ed Lojeski

### **Answer Me**

*The Band's Visit*  
David Yazbek, arr. Bob Bachelor

*Kingsley Sherwood, Laurence St-Denis  
Clarinet solo: Bruno Lamarche*

### **Brotherhood of Man**

*How to Succeed in Business Without Really Trying*  
Frank Loesser, arr. Christopher Smith

*Brad Cameron, Robert Pilon  
Laurie-Anne Jean-Baptiste*

## ACT TWO • ACTE DEUX

### **Cantata for a First Date**

*I Love You, You're Perfect, Now Change*  
Jimmy Roberts, Joe DiPietro

*Maia Aziz, Claudia Carino*  
*Jonathan Courville-Vaive*  
*Richard Kallos*

### **Show Off**

*The Drowsy Chaperone*  
Lambert & Morrison

*Sophie Protopoulos*  
*Sean Bucholz, Hélène Charbonneau, Lindsey Hawley*  
*Kingsley Sherwood, Laurence St-Denis*

### **Children Will Listen**

*Into the Woods*  
Stephen Sondheim, arr. Mark Brymer

### **Mama Who Bore Me**

*Spring Awakening*  
Stephen Sater, Duncan Sheik, arr. Lisa DeSpain

**Sopranos & Altos**

### **Two By Two**

*The Book of Mormon*  
Alan Menken, Stephen Schwartz, arr. Mac Huff

**Tenors & Basses**  
*Sean Bucholz, Brad Cameron*  
*Shawn Coverini, Richard Kallos*  
*Jean-Philippe Leclair, Robert Pilon*  
*Zihan Zuo*

### **The Grass is Always Greener**

*Woman of the Year*  
Kander & Ebb

*Claudia Carino, Yamila Scarone Azzi*

### **Once Upon a Time**

*All American*  
Lee Adams, Charles Strouse, arr. Kirby Shaw

### **Let Me Be Your Star**

*Smash*  
Scott Wittman, Marc Shaiman, arr. Greg Gilpin

*Muriel Bernard Browman*  
*Frédérique Gagnier*

### **Les Misérables** (*Medley*)

Claude-Michel Schönberg, Alain Boublil  
arr. Ed Lojeski

**At the End of the Day**  
**J'avais rêvé** - *Katherine Fournier*  
**Castle on a Cloud**

**Master of the House** - *Sean Bucholz, Yamila Scarone Azzi*  
**À la volonté du peuple** - *Jonathan Courville-Vaive, Shawn Coverini*  
**On My Own** - *Muriel Bernard Browman*  
**Comme un homme** - *Daniel Morais, Tenors & Basses*  
**Finale** - *Daniel Morais, Katherine Fournier, Muriel Bernard Browman*

## THANK YOU • MERCI

Tania Watson – *Montreal West United Church*  
Daniel Villeneuve – *Conseil des arts de Montréal*  
Cynthia Bonenfant, Maude Trudel – *Centre musical CAMMAC Music Centre*  
Tristynn Duheme, Jennifer Strahl and crew – *Concordia Theatre*  
Alexandre Michaud, *consultant accessoiriste* – *Théâtre du Rideau Vert*

Karen Pearce, Ron Rosenthal, Jean-François Trudel, Jessika Boulay

Chris Barillaro, Pat Nolan & Romualdo Barillaro, Christopher Smith  
Eric Elliott Lee, Laura Anderson, Rachel Quintero Faia & Kevin Conforti

### Thank You to Our Sponsors

David Forest, Maria Riccitelli – **FOREST Solutions d'assurance**  
Majad Namruo – **BMO Private Wealth**  
Michael Hayden – **MNP**  
Gregory Galardo, Nicolas Routs Galardo – **Groupe Montclair**  
Neal Caminsky – **Red Dream Studios**  
Miles Flood – **MF Racing**  
Paul Flood – **Pickle Creative Agency**

*Nous remercions le Conseil des arts de Montréal  
de son appui financier !*



### Rehearsal set-up and strike crew | Montage et démontage pour les répétitions

Allison Brown, Claudia Carino, Daniel Morais, Eric Bolduc, Hélène Charbonneau  
Jason Ferris, Jean-Philippe Leclair, Jonathan Courville-Vaive, Katherine Fournier  
Laurence St-Denis, Monique Boucher, Muriel Bernard Browman, Richard Kallos  
Robert Pilon, Serge Danis, Shauna Reimer

### FRONT OF HOUSE VOLUNTEERS

*Coordinator • Diane Dupuis*

Diane Dupuis, Laura Anderson, Suzanne Armstrong, Sheila Arnold, Annick Beaulieu  
Maryse Beaulieu-Salamido, Martine Bernier, Danielle Buch, Sarah Caille, Lisa Chernovol  
Josée Codere, Jorge Cordts, Kristina Cummings, Fiona Ebel, Raina Ebel, Marc Francoeur  
Gerry Frohlich, Janice Gallant, Olga Gross, Sue Hembling, Vee Herrera, Arlene Hyland  
Katie Kandra, Helene Lagace, Luc Leblanc, Julia Lemire, Molly Light, Julie Martineau  
Alessandro Mercurio, Cristina Miniaci, Ann Mooney-Stewart, Jennifer Papworth  
Carolyn Peters, Donna Pinsky, Marian Pinsky, Randy Pinsky, Sheila Pinsky  
Robert Proulx, Marie-Claire Saindon, Kenza Sakhaoui, Marcelo Santos, Ben Schwartz  
Marlene Schwartz, Penelope Streicher, Cal Tait, Elena Verheles, María Inés Zylber

# PRODUCTION

## ***Production Team • Équipe de production***

Bob Bachelor • Cathy Burns • Hélène Charbonneau • Jonathan Patterson  
Katherine Fournier • Laurence St-Denis • Louise Dorais  
Muriel Bernard Browman

Musical Director	Bob Bachelor
Stage Director, Choreographer, Conductor	Jonathan Patterson
Guest Choreographer & Consultant	Cathy Burns
Accompanist	Robin Chemtov
Guest Sectional Coach	Laura Anderson
Stage Manager	Lupin Senécal
Backstage Help	Justin Muniz
Costume Coordination	Colleen St.James
Lighting Design	Aurora Torok
Sound Design	Carmen Mancuso
Follow Spot Operators	Léon Blanchette, Martin Kaller
Wireless Mic Technician	Nathalie Thermil
Wireless Mic Assistant	Geneviève Blanchette
Concordia Theatre Stage Supvr.	Tristynn Duheme
Dance Captains	Frédérique Gagnier, Jean-Philippe Leclair
Props	Katherine Fournier
Props Assistance	Hélène Charbonneau, Muriel Bernard Browman Guillaume Dallaire, Laurie-Anne Jean-Baptiste
Musical Arrangements	Bob Bachelor, Christopher Smith Chris Barillaro, Eric Elliot Lee
Music Librarian	Colleen St.James
IT, Technical Support	Richard Kallos, Laurence St-Denis, Zihan Zuo
Auditions Coordinator	Sean Bucholz
Section Heads	Katherine Fournier, Jean-Philippe Leclair, Shauna Reimer
Patron Program	Frédérique Gagnier, Gillian Jonston, Katherine Fournier Robert Pilon, Louise Dorais
Retreat Coordination	Laurence St-Denis, Katherine Fournier
Box Office	Diane Dupuis
Front of House Manager	Diane Dupuis
Video/Concert Video Editing	Michel Cyr/Alessandro Mercurio
Concert Photographer	Tam Lan Truong - <i>Tamphotography.ca</i>
Rehearsal Photographer	Laurie-Anne Jean-Baptiste
Publicity	Danny Payne, Alex Nitsiou - <i>Raison d'Être Média</i>
Promotion, Social Media	Laurie-Anne Jean-Baptiste
Graphic Design ( <i>Show Visuals</i> )	Nancy Godin - <i>Dingo Design</i>
Translation ( <i>En quelques mots/Setting the scene</i> )	Kate Cryderman
Webmaster	Neal Caminsky - <i>Red Dream Studios</i>
Program Book Ad Sales & Design	Laurie-Anne Jean-Baptiste



## Become a Lyric Theatre Supporter! *Soutenez le Lyric Theatre avec votre don!*

If you haven't already done so, please consider donating to The Lyric Theatre. Your gift, no matter the amount, helps to ensure that the Singers will continue to bring music and joy to our community for years to come.

*Si ce n'est déjà fait, merci de considérer de faire un don au Lyric Theatre. Votre appui, peu importe sa taille, aide à garantir que les Singers pourront continuer à diffuser musique et joie dans notre communauté pour les années à venir.*

### Supporters receive benefits!

#### *Nous offrons des avantages à nos donateurs et donatrices!*

- Reserved seating at the Christmas concert for a donation of \$60 or more  
*Des sièges réservés pour le concert de Noël pour les dons de 60\$ et plus*
- A tax receipt in the full amount of your donation  
*Un reçu fiscal correspondant au montant total de votre don*
- Advance notice of ticket sales for all our concerts  
*Une prévente exclusive de billets pour nos deux concerts annuels*
- Acknowledgement in our program books  
*Un mot de remerciement dans nos programmes de soirée*
- Two newsletters a year  
*Deux infolettres par année*



Contribute to  
Lyric's future today!

*Contribuez à l'avenir  
de Lyric aujourd'hui!*

[thelyrictheatre.ca](http://thelyrictheatre.ca)

[lyricpatrons@gmail.com](mailto:lyricpatrons@gmail.com) - 514-735-9908



## OUR DONORS • NOS DONATEURS

The Lyric Theatre sincerely thanks all of its donors for their generous support.  
Le Lyric Theatre remercie chaleureusement tous ses donateurs.

### In Memoriam

Bob Bachelor

### Lifetime Members • Membres à vie

Donald C. Belec  
Cathy Burns  
Jim Brown

Jane Crane  
Louise Dorais  
Sheila Engel Katz

Carolyn Flower  
Linda LaRoche  
Jean-François Trudel  
Meta Witthoef

### Donors • Donateurs

Étienne Allard  
Camille Beaudoin  
Nathalie Beaudoin  
Amélie Bélanger  
Marc Belcourt  
Magali Bitursi  
Eric Bolduc  
Robert Brazeau  
Sonia Browman  
Jessica Brown  
Jim Brown  
Cathy Burns  
Mary Burns  
Robert Burns  
Katherine Byford  
Bradley Cameron  
Jean Caron  
Karen Cassini  
Lynne Chlala  
Russell Clarke  
Marie Claude L'Ecuyer  
Alice Cloutier  
Sandra Cooper Fraid  
Antonio Coverini  
Linda Cregan  
Bernard Creighton  
Joanne Cutler  
Geneva Daigle Boucher  
Marc Demouy  
France Desabrais

Manon Deslauriers  
Joseph Diab  
Louise Dorais  
Diane Dupuis  
David Estok  
Miles Flood  
Renee Gagnon  
Jacques Gelinias  
Linda Guignon  
Jane Hackett  
Sheila Hannigan  
Linda Haynes  
Cynthia Hedrich  
Susan Hembling  
Marilyn Howell  
Laurie-Anne Jean-Baptiste  
Gillian Johnston  
Philip E Johnston  
Cynthia Jones  
Joanne Jones  
Martin Kaller  
Garry Kallos  
Lawrence Kaplan  
Diane Sandra Knight  
Elizabeth Kremmel  
Lajoie des Finances Inc  
Carl Lapointe  
Linda LaRoche  
George Lavoie

Sophie Leduc  
Timothy Malloch  
Mia Massicotte  
Joan McCordick  
Janet Moir  
Michael Moralejo  
Anita Mountjoy  
Caroline Myles  
Robert Pilon  
Samuel Pirau  
Shauna Reimer  
Pierre Roberge  
Allyson Rowley  
Silvia Sabeva  
Marian Schluter  
Marlene Schwartz  
Madelene Sebaldt  
Ashley Sherwood  
Jacques St. Gelais  
Gerald Stachrowski  
Carmen St-Denis  
Malcolm Stewart  
Marilyne St-Georges  
Carol Sullivan  
Alan Switzer  
Nathalie Thermil  
Marie-Eve Trepanier  
Diane Webster  
Gerald Zion  
Zihan Zuo

Visit our website to learn more about supporting the Lyric Theatre Singers.  
Consultez notre site web pour savoir comment soutenir  
les chanteurs du Lyric Theatre Singers.

[www.thelyrictheatre.ca](http://www.thelyrictheatre.ca)

# Broadway with Love... Setting the Scene

## ACT ONE

### **Sounds of the Earth / It's a Grand Night for Singing** (*A Grand Night for Singing*, 1993)

The moon is high and the stars are bright. What a grand night for singing and falling in love!

### **Long Ago (and Far Away)** (*Cover Girl*, 1944)

This famous melody with music by Jerome Kern and lyrics by Ira Gershwin was sung by Gene Kelly and Rita Hayworth in the musical film *Cover Girl*.

### **Meadowlark** (*The Baker's Wife*, 1989)

Geneviève is torn between her husband and a younger man. She considers her dilemma as she recalls the tale of the meadowlark that refused to follow the sun god and then perished. What will she decide?

### **Folies Bergères** (*Nine*, 1982)

In this dazzling homage to Parisian music halls, Lilli La Fleur lectures film director Contini on the importance of magic and entertainment in cinema, while a journalist criticizes his movies, saying they're boring and unremarkable.

### **Colors of the Wind** (*Pocahontas*, 1995)

Pocahontas describes her people's worldview to John Smith: Nature is a living entity that connects all beings. She encourages him to respect that nature, honour their differences and see beyond prejudice.

### **Lovely** (*Putting it Together*, 1999)

Lovely, radiant and impossible to ignore, she wins hearts with ease. What can you do when faced with such beauty? What more can you ask for?

### **The King and I - Medley** (1951)

A classic by Richard Rodgers and Oscar Hammerstein II, *The King and I* chronicles the evolving relationship between British schoolteacher Anna and the king of Siam as they develop a mutual respect and affection.

### **Something's Coming / Tonight** (*West Side Story*, 1961)

These two songs from *West Side Story* express hope and the spark of love. Tony can sense that a life-changing event is on the way. He and Maria celebrate their love while looking forward to their next encounter.

### **Answer Me** (*The Band's Visit*, 2017)

The anchor song of *The Band's Visit*, *Answer Me* returns the characters to their longing for connection, with someone, something, somewhere.

### **Brotherhood of Man** (*How to Succeed in Business Without Really Trying*, 1961)

In this catchy number, a company's employees learn that the key to success is team spirit and good relationships. They poke fun at the unwritten rules of the business world with humour.

# Broadway with Love... Setting the Scene

## ACT TWO

### **Cantata for a First Date** (*I Love You, You're Perfect, Now Change*, 1996)

Four people are getting ready for a first date. This number relates the innermost thoughts, awkwardness and doubts typical of a romantic encounter.

### **Show Off** (*The Drowsy Chaperone*, 1998)

What a shock! Broadway star Janet Van de Graaff is giving up her career! But is that what she really wants?

### **Children Will Listen** (*Into the Woods*, 1986)

This moving piece underscores the responsibility that adults have towards future generations, and the long-lasting impact of their words and choices.

### **Mama Who Bore Me** (*Spring Awakening*, 2006)

Wendla is confused about the changes brought on by puberty, and resents her mother's silence on the topic. This song introduces the central themes of the musical: repression and the dangers of ignorance.

### **Two by Two** (*The Book of Mormon*, 2011)

Today's the big day! The new missionaries are about to find out where—and with whom—they'll be going on their missions. Elder Price has big dreams. Will they come true?

### **The Grass Is Always Greener** (*Woman of the Year*, 1981)

Tess and Jan find that their life doesn't always live up to their expectations. This delightful duet explores their frustrations and the illusion that perfect happiness exists ... somewhere else!

### **Once Upon a Time** (*All American*, 1962)

This quiet piece takes a heartfelt look at the sweetness of youthful love and the regret of that love fading over time.

### **Let Me Be Your Star** (*Smash*, 2012)

This evocative number depicts two ambitious aspiring stars in search of fame and recognition.

### **Les Misérables – Medley** (1985)

This huge literary and musical success tells the story of Jean Valjean's life as he meets striking characters like Fantine, Éponine, Cosette, and an idealistic group of young revolutionaries.

# Broadway with Love : Du coeur à la scène... En quelques mots

## ACTE UN

### **Sounds of the Earth / It's a Grand Night for Singing** (*A Grand Night for Singing*, 1993)

La lune est haute, les étoiles scintillent... quelle belle soirée pour chanter et laisser naître l'amour!

### **Long Ago (and Far Away)** (*Cover Girl*, 1944)

Chanté par Gene Kelly et Rita Hayworth, ce célèbre air tiré du film musical *Cover Girl* a été composé par Jerome Kern, sur des paroles signées Ira Gershwin.

### **Meadowlark** (*The Baker's Wife*, 1989)

Geneviève hésite entre son mari et un homme plus jeune. À travers le conte d'une alouette des prés qui refuse de suivre le dieu Soleil et en meurt, elle réfléchit à son propre destin. Que décidera-t-elle?

### **Folies Bergères** (*Nine*, 1982)

Vibrant hommage au music-hall parisien, cette chanson voit Lilli La Fleur sermonner le réalisateur Contini sur l'importance de la magie et du divertissement au cinéma, pendant qu'une journaliste critique ses films, les jugeant ternes et insignifiants.

### **Les couleurs du vent** (*Pocahontas*, 1995)

Pocahontas explique à John Smith la vision du monde de son peuple : une nature vivante où tous les êtres sont liés. Elle l'invite à respecter cette nature, à honorer leurs différences et à voir au-delà des préjugés.

### **Lovely** (*Putting it Together*, 1999)

Belle, pétillante et impossible à ignorer, elle conquiert les cœurs avec aisance. Que faire devant tant de beauté? Que demander de plus?

### **The King and I - Medley** (1951)

Classique de Richard Rodgers et Oscar Hammerstein II, *The King and I* raconte l'évolution d'une relation marquée par le respect et l'affection entre Anna, une institutrice anglaise, et le roi de Siam.

### **Something's Coming / Tonight** (*West Side Story*, 1961)

Ces deux chansons de *West Side Story* expriment l'espoir et l'élan amoureux. Tony pressent qu'un événement transformera sa vie. Avec Maria, ils célèbrent leur amour et attendent leur prochaine rencontre avec fébrilité.

### **Answer Me** (*The Band's Visit*, 2017)

Chanson phare de *The Band's Visit*, *Answer Me* renvoie les personnages à ce désir de connexion qu'ils espèrent, avec quelqu'un, quelque chose, quelque part.

### **Brotherhood of Man** (*How to Succeed in Business Without Really Trying*, 1961)

Dans ce numéro entraînant, les employés d'une entreprise apprennent que la réussite passe par l'esprit d'équipe et les bonnes relations. Avec humour, ils tournent en dérision les codes du monde des affaires.

# Broadway with Love : Du coeur à la scène... En quelques mots

## ACTE DEUX

### **Cantata for a First Date** (*I Love You, You're Perfect, Now Change*, 1996)

Quatre inconnus se préparent pour un premier rendez-vous. Le numéro enchaîne les pensées intérieures, les maladresses et les hésitations typiques de la rencontre amoureuse.

### **Show Off** (*The Drowsy Chaperone*, 1998)

Scandale! La star Janet Van de Graaff veut mettre un terme à sa carrière! Mais le veut-elle vraiment?

### **Children Will Listen** (*Into the Woods*, 1986)

Cet air émouvant souligne la responsabilité des adultes envers les générations futures, et l'impact durable de leurs paroles et de leurs choix.

### **Mama Who Bore Me** (*Spring Awakening*, 2006)

Wendla exprime sa confusion face aux changements de la puberté et regrette le silence de sa mère. La chanson introduit les thèmes centraux de cette pièce de théâtre musicale : la répression et les dangers de l'ignorance.

### **Two by Two** (*The Book of Mormon*, 2011)

C'est le grand jour! Les nouveaux missionnaires sont à quelques instants de savoir où, et avec qui, ils partiront en mission! Elder Price a de grandes attentes. Seront-elles comblées?

### **The Grass Is Always Greener** (*Woman of the Year*, 1981)

Tess et Jan constatent que leur vie ne correspond pas toujours à leurs attentes. Ce délicieux duo explore leurs frustrations et l'illusion qu'un bonheur parfait existe... ailleurs!

### **Once Upon a Time** (*All American*, 1962)

Avec émotion, cet air tendre rappelle la douceur des premiers élans amoureux et les regrets de les voir s'effacer avec le temps.

### **Let Me Be Your Star** (*Smash*, 2012)

Cet éclatant numéro met en scène deux ambitieuses aspirantes vedettes en quête de gloire et de reconnaissance.

### **Les Misérables – Medley** (1985)

Cet immense succès littéraire et musical retrace le destin de Jean Valjean, qui croisera au fil de son parcours des figures marquantes comme Fantine, Éponine et Cosette, ainsi qu'une jeunesse révolutionnaire remplie d'idéaux.



# Every great story begins with a dream.

For over 25 years, we have helped over 500 entrepreneurs and businesses bring their vision to life through website development, branding, marketing, and design.



**Start your mission today**  
reddreamstudios.com  
(514) 708-0136



## YOUR LOCAL NEWS

IN PRINT | ONLINE | APP

AWARD WINNING JOURNALISM AVAILABLE IN 1000 DEPOTS,  
ONLINE AT [THESUBURBAN.COM](http://THESUBURBAN.COM), ON OUR APP AND IN YOUR EMAIL



### The Suburban media

[www.thesuburban.com](http://www.thesuburban.com) | 514-484-1107





# Your Legacy Ensured

## Un avenir assuré

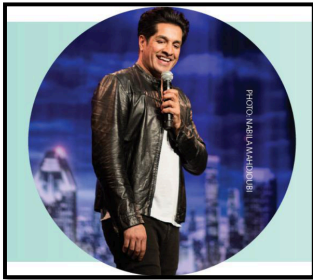
**FOREST.**

DAVIDFOREST.COM

T. 514 866-3838 • T. 1 800 663-3475

Your full-service, private Medical Centre:

- Annual Checkup Evaluation:
  - McGill-Trained Physicians specialized in Family Medicine and Emergency Medicine
  - Comprehensive Annual Check-up with Industry-Leading Blood Testing
  - Industry-Leading Health Assessment Technologies
  - Highest Level Digital Encryption and Multi-Layered Patient Data Protection
- Access 12/7 and Access 24/7 Members Only:
  - Your own Family Physician
  - Decades of Experience helping Patients Navigate the Quebec Healthcare Landscape
  - Our standard appointments are 30 **minutes**
  - Real-time up to 24/7 access to a Family Physician for emergencies
- Our clinics:
  - Surgical-grade air purification systems throughout the clinic
  - 24/7 Air Quality Monitoring and Management



**SUGAR SAMMY - Comedian**  
Member for over 10 years!



**Andrew Carter – Radio Host**  
Member for over 15 years!



**Terry Di Monte – Radio Host**  
Member for over 11 years!

Proudly providing our patients with state-of-the-art medical care  
and peace of mind for over 20 years